



# TAG Heuer

PROFESSIONAL TIMING

## HL 680 Radio Data / Voice

### User Manual

Version 01/2009



## 1. Introduction

---

The radio set HL 680 is dedicated to transmit Timing Data from Chronoprinter 540, and also for voice communication between HL680s.

The vocal communication has priority over the Data transmission. Data awaiting transmission will be stored in memory and transmitted when the channel is clear.

The HL 680's reliability during extreme weather conditions (rain, snow, sand etc...) and is the ideal radio for all situations.

## 2. Description

---

1. Adjust the Volume **[VOL]**  
Switch ON/OFF and adjust the volume.
2. Red button: function button could be programmed by the software.
3. Antenna input
4. Connector CP 540 / Data
5. Keys ▼ and ▲ to select pre-programmed channel.
6. Key P0 to P1  
P0 = Call and Synchro test  
P1 = Reset + Acknowledge
7. LED Transmission / Busy
8. Key PTT (Push to talk)  
Press and hold for vocal transmission, and release to receive.



### 3. Accessories

- Flexible antenna  
Connector for a flexible antenna.
- Kit for BNC antenna is available  
(Especially for the professional antenna)

#### **WARNING**

Never carry the radio by the antenna..  
Transmitting without the antenna could damage the radio module.



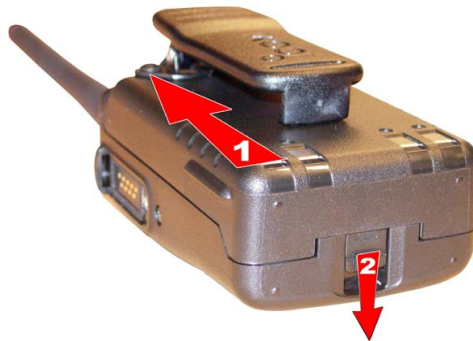
- Battery Pack

#### **To fix the Battery Pack,**

Place the battery against the radio and push it as shown on the arrow (1) until the locking mechanism (2) makes a small click.

#### **Removing the Battery Pack:**

Press the locking button (2) as show the arrow, and remove the back pack.

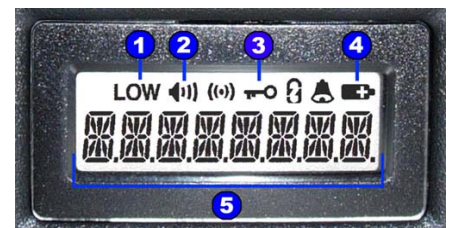


#### **WARNING**

Before fitting or removing a Battery Pack, check carefully that the radio is clean, and free from any dust or humidity.  
Any ingress of water or dust in the radio or the pack battery can cause damage.

### 4. Display

1. Power of transmission  
Displays three levels of power: Low 2 (1W),  
Low 1 (2W), no display (5W)
2. If the level of communication is not muted.
3. Indicates if the keyboard is locked
4. Indicates the charge level of the battery  
If the logo is displayed or flashing, the level of charge is below the programmed level.



5. Displays the working channel, channel name etc.

For other symbols, refer to the ICOM user's manual.

## 5. User setting

---

The mode « user setting » is available when you switch ON the radio. This allows you to change settings or customize the operator mode.

- Activate the user setting:
  - To active the « user setting », switch ON the radio (turn the button [ VOL ], and press simultaneously the keys ▼ and ▲
  - Press and hold for a couple of seconds the key [ P0 ] to access to user setting mode. Select the menu by pressing shortly the button [ P0 ].
  
- Settings available via the user setting.
  - Retro-light: ON, OFF, or auto
  - Beep : ON / OFF
  - Mute level: 0 to 255
  - AF level mini: ON / OFF
  - Micro sensitivity : 1 to 5
  - Battery level: Display or masked

Use the key ▼ and ▲ to modify the level of adjustment

## 6. Battery charge

---

For a long life and an optimum use, you need to charge completely the battery pack before the first use.

### **WARNING**

Switch OFF the radio during charging to ensure no damage.

- Recommended charging temperature. +10 °C to +40 °C
- Range of temperature (Batt Li-Ion) -20 °C to +60 °C
- Only Use the charger ICOM (BC-119) or other model proposed by ICom or TAG Heuer (BC-152, BC-121N)
- **NEVER** use adaptator from other suppliers.
- **NEVER** use chargers from other suppliers.

### **RECOMMENDATION**

Charge the battery pack provided for a minimum of 10 hours.

With the Batteries Li-Ion it is not necessary to charge them and to discharge them completely to prolong their lifespan to the maximum.

It is thus recommended to charge these batteries with regular intervals while taking care to limit the time of load.

### **CAUTION!**

**Never** insert into the charger a battery pack whilst it is wet or soiled.

**High risk of corrosion or damage to the charger.**

The charger is not water proof and can easily be damaged by water ingress.

**Never** incinerate the worn battery packs. The gases contained in the battery can cause an explosion.

**Never** immerse the battery pack. If there is any presence or trace of moisture on the pack, it should be immediately wiped with a dry tissue (particularly the terminals of the battery) BEFORE fixing it to the transmitter-receiver. The moisture is likely to corrode the terminals of the battery or to prevent the connection of the battery etc...

**Never** connect the terminals of the pack battery in short-circuit. In the same way, the current can run out via the close metal objects, such as collars etc... It is thus necessary to act with precaution during transport or of the arrangement in a bag or near metal objects etc...

**To avoid** keeping the battery pack fully loaded or completely discharged for a long period, which reduces the lifespan of the battery. In the case of prolonged non-utilization of the battery pack, it is necessary keep the system in a dry room, after a normal discharge or to use the battery until appearance of the weak witness of load, then to extract it from the transmitter-receiver.

**In case of a reduced capacity of the battery pack, even after the load, leave the system ON a whole night to obtain a complete discharge, then reload the battery pack completely.**

**Replace the battery pack if the problem continues.**

## 7. Battery box (option ref : HL 680-8 )

---

To use the Battery box (option) for the radio, insert 5 alkaline AA batteries (LR6) as shown on Fig N°1. The Battery Box HL680-8 is water proof and conforms to the norm JS, level 4.

1. Release the lock and open the cover as shown on the arrow 2 (fig 1)
2. Insert 5 alkaline AA batteries (LR6) (fig.2)
  - Use only alkaline battery
  - Respect the polarity.
  - Do not hide the extraction ribbon under the batteries.
3. Close the box cover as shown on fig 1 (arrow (2)) and check that the lock is correctly placed
4. Check carefully that the joint and the ribbon are correctly placed and do not protrude from the battery box.

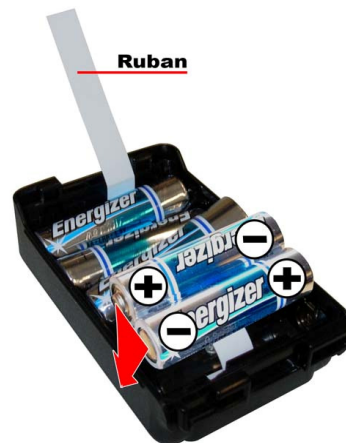
### **WARNING**

- Check carefully that ALL the batteries are ALL the same type and capacity. Also take care to not use worn batteries
- To maintain / clean the battery connection, it is recommended to clean once per week.

Fig 1



Fig 2



## 8. Connection

Connect the Special data cable to the connector [SP MIC] of the radio, and tighten the screw fastening.



### IMPORTANT

Replace the cap of connector [SP MIC] of the Radio when the Data Cable is not connected. There is no risk of water infiltration in the radio even in the absence of cap, however the connection pins can oxidize if they are in contact with moisture.

## 9. Accessories

---

- Battery Box – HL 680-8
- Antenna – Connector
- Nylon Case – HL 680-9

## 10. Startup with Chronprinter 540

---

- Ensure you have all the necessary cables:



- Configure the CP 540 as follows:

[MENU \(F\)](#) → [Parameters](#) → [RS232](#) → [To PC](#) → [9600 Bds. with Flow Ctrl](#)

See chapter 5.2.9 from Chronprinter 540 user's manual.

- Ensure that you connect the Radio to the PC 540 and switch ON before starting a new RUN (from the CP 540).  
Press the key **[ P0 ]** to test the connection between systems.  
The message "CONNECT" is displayed if the radios are able to connect together.  
If the message "FAILED" is showing, ensure that all systems are set to the same frequency and the distance is not too big (or other interference).

In case of no communication during a race, you can re-initialised the system by pressing the key **[ P1 ]**, (RESET) . All times not yet transmit are memorized into the CP 540.

Trick: if you need to resend a time from a CP 540, use the function "Duplicate" from the CP 540 menu.

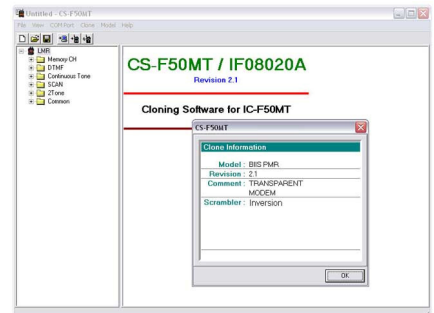


## 11. Radio Programming

### a. Synchro to a PC

- Switch OFF the radio
- Connect the Radio to a PC (RS232)
- Run the program « CSF50.exe ».
- Check your configuration (COM)
- Press the button [ P0 ] and switch ON the radios simultaneously.

The radio info should display on the software:

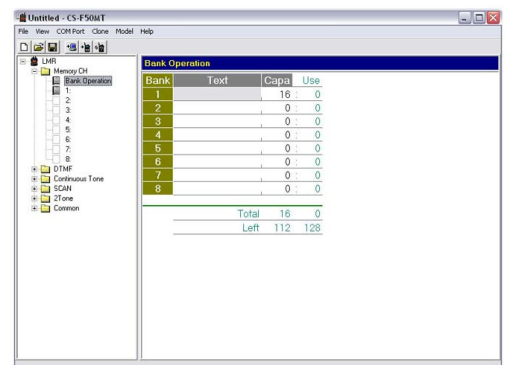


### b. Upload the config file on the PC

Before modifying any parameters, download the radio config on your PC, with the

button: 

Do not forget to save the original config.



### c. Program frequency

Allows you to get up to 8 Banks of 16 channels

**BANK:** N° of the bank of 16 programmed frequency

**TEXT:** Enter name of the bank

**CAPA:** Nb channel available

**Use:** Nb of channel used

and the frequency of each channel (for one bank):

**CH X-X:** N° bank – N° Channel

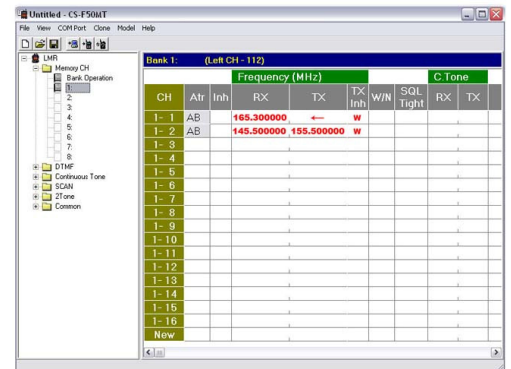
**RX:** Receiver frequency (in MHz)

**TX:** Transmitter frequency (in MHz)

**Tx = ← if similar as Rx**

**RF POWER :** Transmission power

**High** (5W), **Low 1** (2W) and **Low 2** (1W)



The screenshot shows the 'Bank 1: (Left CH - 112)' configuration window. It contains a table with columns: CH, Atr, Inh, Frequency (MHz), TX, TX Inh, W/N, SQL Tight, RX, TX, and C-Tone. The table lists 16 channels (1-1 to 1-16) with their respective receiver (RX) and transmitter (TX) frequencies. Channel 1-1 has RX 165.300000 and TX ← W. Channel 1-2 has RX 145.500000 and TX 155.500000 W. Other channels have empty fields.

CH	Atr	Inh	Frequency (MHz)	RX	TX	Tx Inh	W/N	SQL Tight	RX	TX	C-Tone
1- 1	AB			165.300000	←		W				
1- 2	AB			145.500000	155.500000		W				
1- 3											
1- 4											
1- 5											
1- 6											
1- 7											
1- 8											
1- 9											
1- 10											
1- 11											
1- 12											
1- 13											
1- 14											
1- 15											
1- 16											
New											

Once the parameter fields are correct, download the configuration to the radio

- download 

Wait until the end of the transmission (radio will display « Cloning OK »)

#### **DO NOT FORGET**

Save data file (\*.icf) to your PC, to be able to configure other radios with exactly the same configuration.

## 12. Technical specification

---

### General

- Operating temperature: -25 °C to +50 °C
- Radio dimensions: 56 x 97 x 36,4mm
- Weight: 250g / radio
- LCD Screen: 8 characters
- Frequency: 136-174 MHz (programmable)
- Nb channel: Max. 128 channels
- Gap between channels: 12.5 MHz
- Antenna impedance: 50 Ohms (SMA Type)
- Power: 7.2 Vdc
- Audio power max: 700 mW
- Consumption (avg):

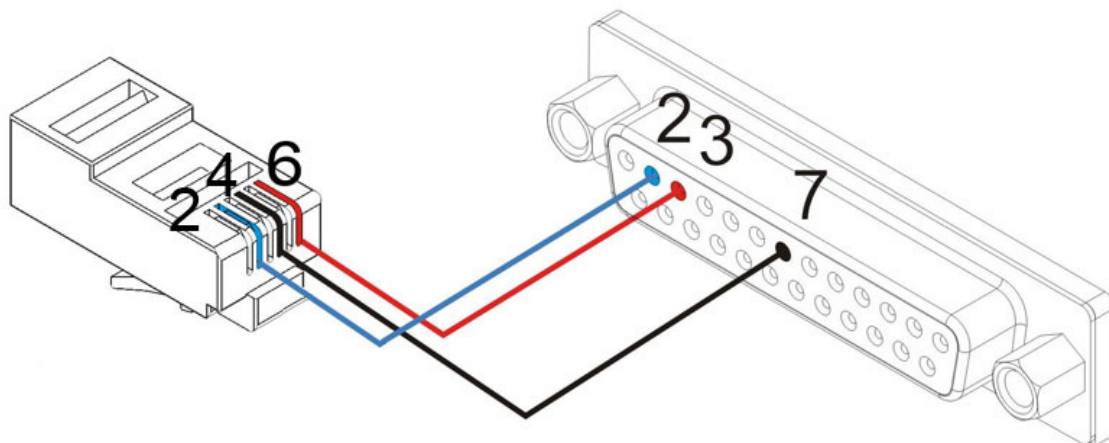
Transmission	5W : 1,8 A
	1W : 0,7 A
	Std-by: 85 mA

### Battery accumulator Pack Li-Ion BP-22

- Type: 7.2V Li-Ion (1700mAh)
- Charging Temperature: 0° to + 40 °C
- Charging Current: 500mA (~ 2.5 hours)

### Power supply BC-145E

- Primary: 230V - 50Hz - 125mA
- Secondary: 16V - 1000mA



### **WARNING**

**The Radios use a frequency band which requires radio licensing  
Please refer to the legislations of the country in force.**



# TAGHeuer

PROFESSIONAL TIMING

**TAG Heuer**  
**PROFESSIONAL TIMING**

6A Louis-Joseph Chevrolet  
2300 la Chaux-de-Fonds  
Switzerland

Tel : 032 919 8000  
Fax : 032 919 9026

E-mail: [info@tagheuer-timing.com](mailto:info@tagheuer-timing.com)  
**Http: //www.tagheuer-timing.com**